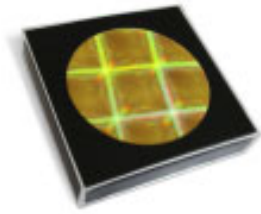


GeoResonators



\$89.95

Size: 2" x 2" 4 per pack

These are a great solution for clearing and balancing the earth's energy in yards, farms, parks and neighborhoods. Because toxic earth radiation can have a negative impact outside as well as inside, GeoResonators offer an important level of protection. They clear geopathic stress zones and, when planted in the four corners of an area, they immediately resonate with each other, infusing the treated area with a healing, life-supporting energy field.

Product Details: Size: 2" x 2" 4 per pack

Material> Holographic parts enclosed in a plexiglass container

Range: radiates a transformative field within the matrix of 4

Maximum distance: planting up to 2 acres or up to a half mile apart



Protect against geopathic stress

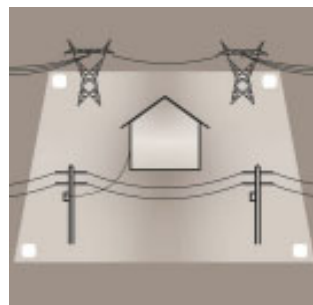
Each 2-inch-square GeoResonator is encoded with a comprehensive program of transformative subtle energies that resonate with the elements of the earth and atmosphere to clear geopathic stress and other toxins and create a balancing and healing effect in the soil, plants, trees and waterways. The transformed earth energy also imprints into conductive materials such as metal, concrete and brick structures in and above the ground. The positive effects on the underground environment can include:

- Full-color spectrum that supports life processes
- Energy imprints of 64 minerals resonant with earth minerals
- Geomagnetic earth pattern to balance soil and land
- Patterns to support atmospheric balance and earth protection.



Setting up the field

You should plant four GeoResonators in a matrix; you can plant them up to a half-mile apart. You can plant more GeoResonators beyond the original matrix to extend the size of the area being treated. You also can use a single GeoResonator on a sick tree or garden, or plant GeoResonators in small waterways, brooks and ponds.



Plant GeoResonators (GRs) around your home, your neighborhood or specific toxic areas to transform and energy balance your environment. Each planting of GRs will extend the vibration to the next location if its within a half mile. The area within the matrix of GRs will be harmonized.